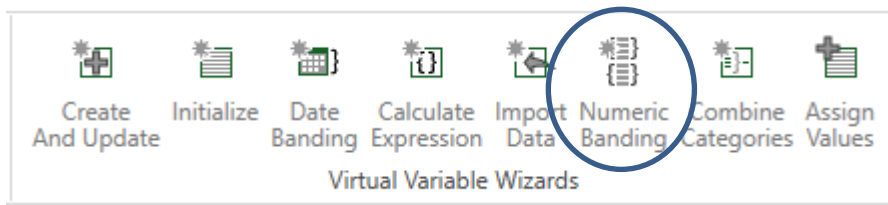
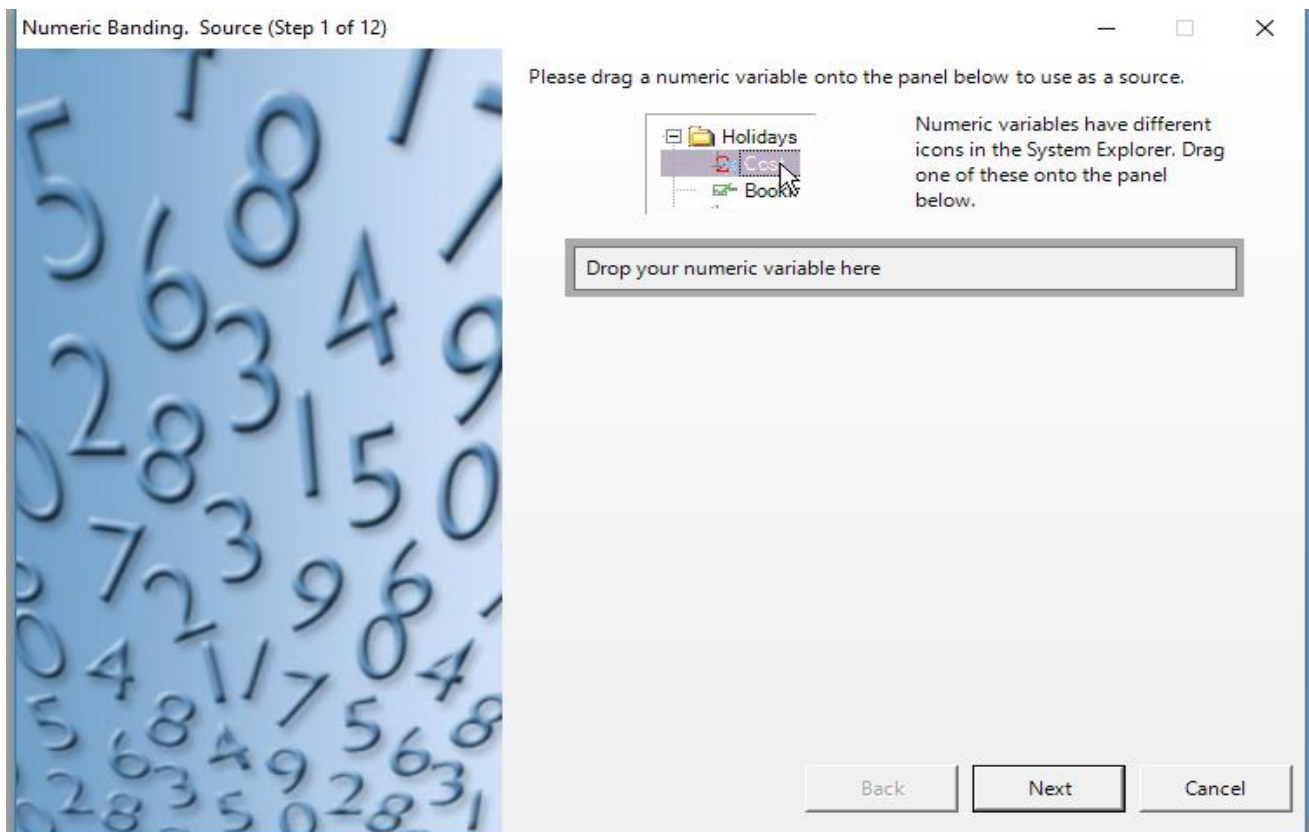


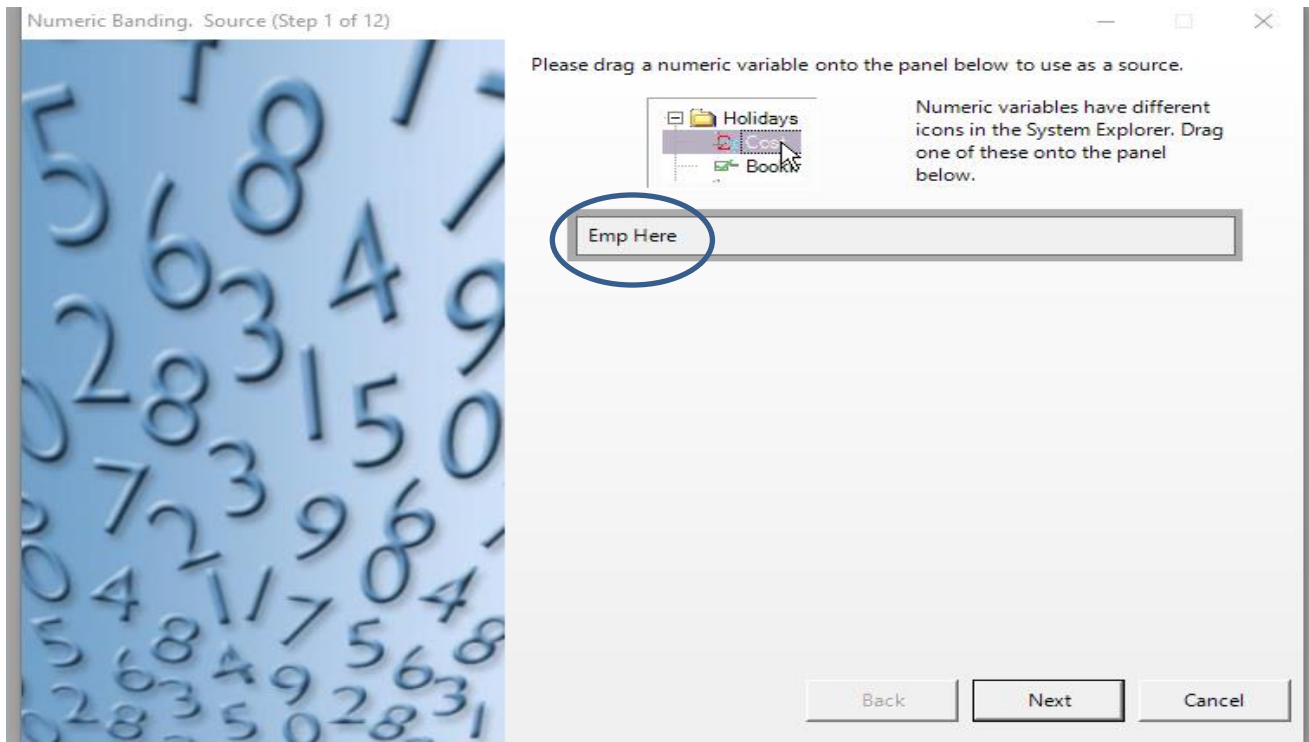
Market Insight Numeric Banding Wizard

The Numeric Banding Wizard is a virtual variable wizard that allows the user to create their own numeric ranges using any numeric variable that is already resident within the System Explorer tab of Market Insight. A numeric variable can be identified by the ¹²³ Emp Total 1,2,3 in front of the description. The Numeric Banding Wizard can be found in the Wizards tab under Virtual Variable Wizards.

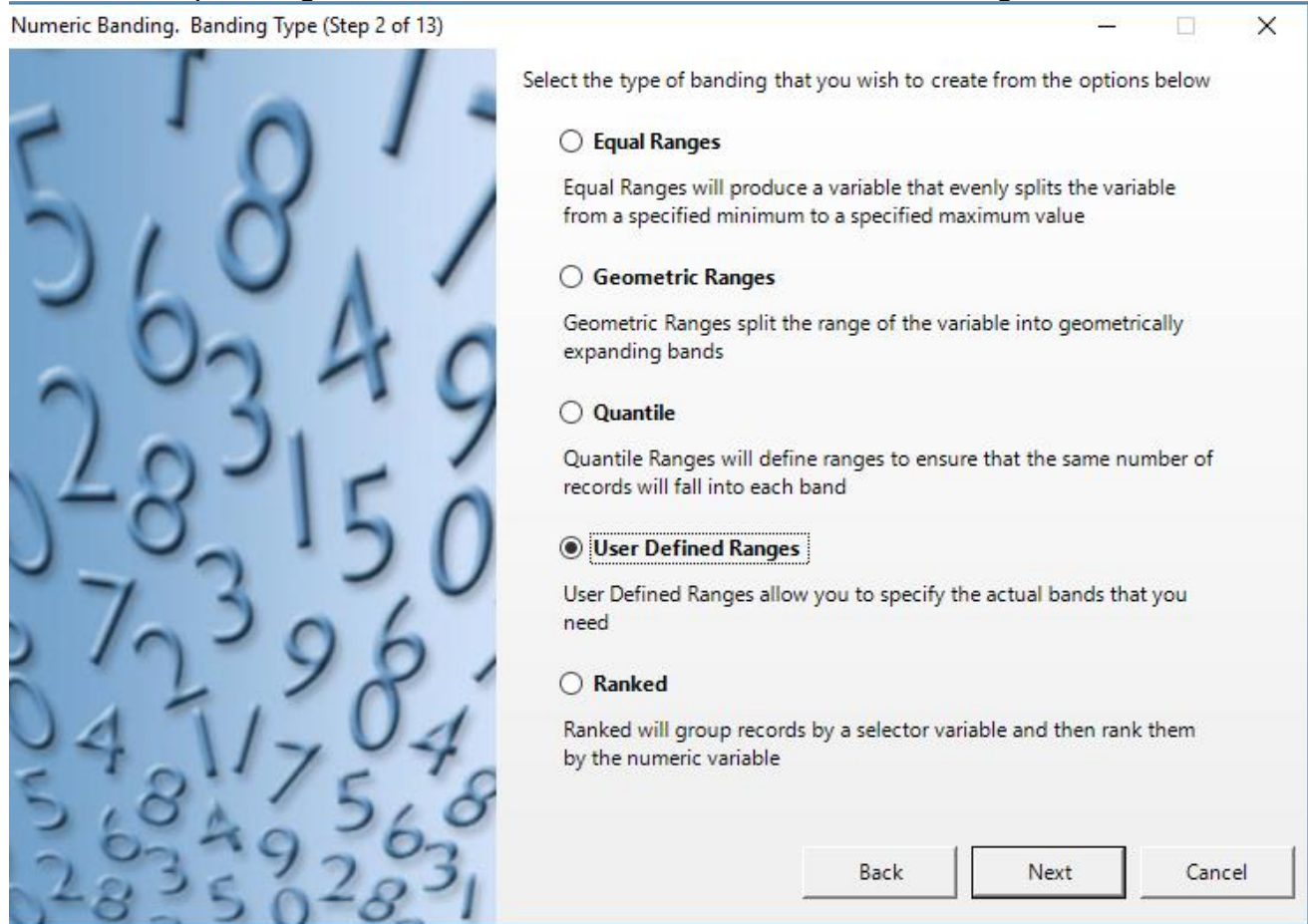


Step 1 requires you to drag and drop the numeric variable that you wish to create your custom ranges for on the field indicated below. For this guide we will be creating custom employee here ranges.





Step 2 asks you to define the type of numeric ranges you would like to create. The tool defaults to equal ranges. We want to create our own user defined ranges.

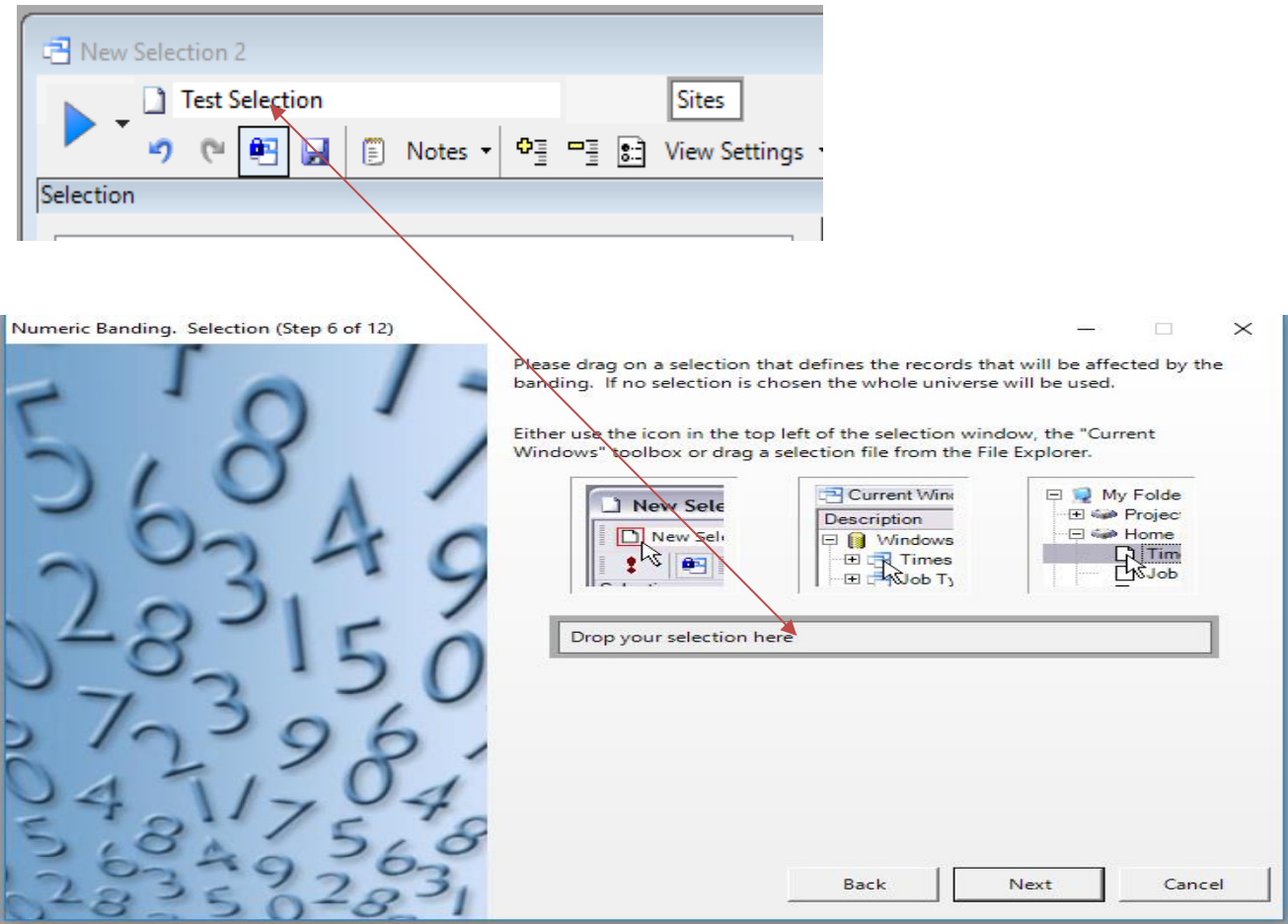


Numeric Banding. Bands (Step 4 of 13)

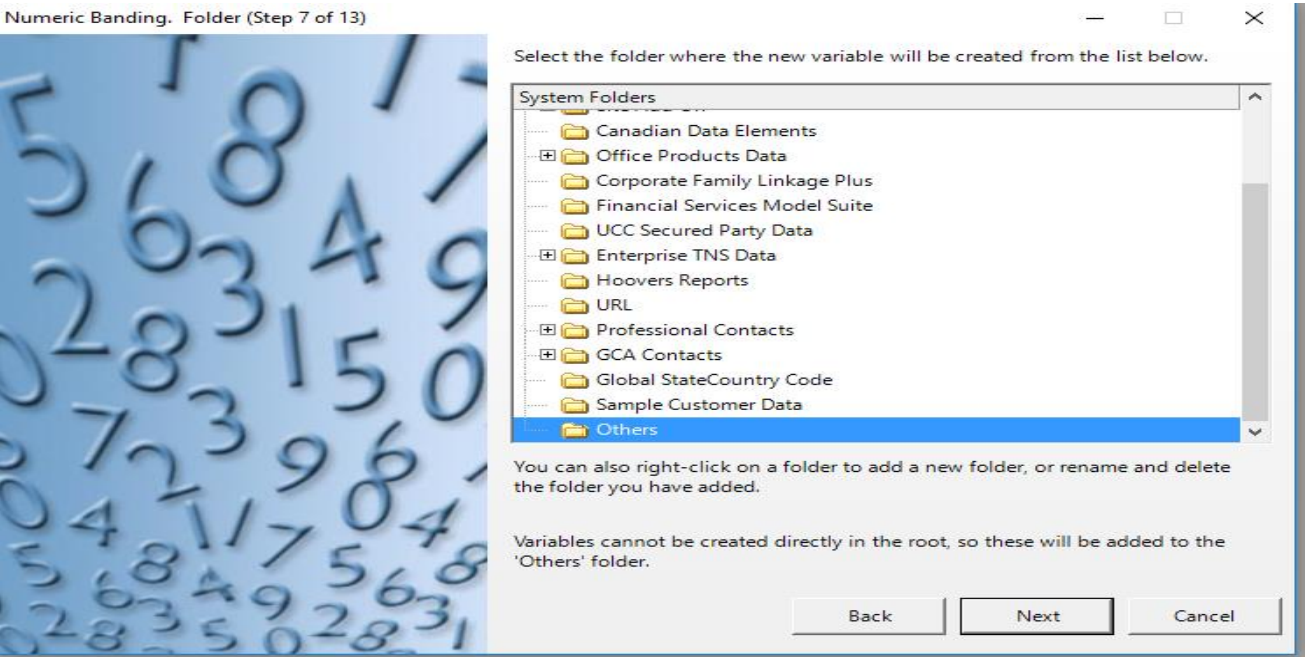
Numeric Banding. Bands (Step 4 of 13)

Page 3 of 6

Step 6 will require you to drag and drop your selection that you want to create the custom ranges for onto the “Drop your selection here” field.




Step 7 you will need to select the folder that you would like to save your new variable to. The Market Insight tool will default to the “Others” folder. We will save our new employee here variable in the others folder.



Step 8 is a free form section where you can type yourself notes regarding your newly created variable.

Numeric Banding. Add Notes (Step 8 of 13)




Enter any notes you want to associate with your variable. Your username will automatically be recorded.

BackNextCancel

Step 9 is where you will need name the new variable your creating in the description field. When finished click next.

Numeric Banding. Name (Step 9 of 12)



We need a description for your new variable. A unique variable reference will be created for the variable based on the description and table name.

DescriptionCustom Employee Here Ranges

Alternatively you can choose to overwrite an existing virtual variable with these new values. Drag the variable to be overwritten onto the panel below.

Drop the variable to overwrite here

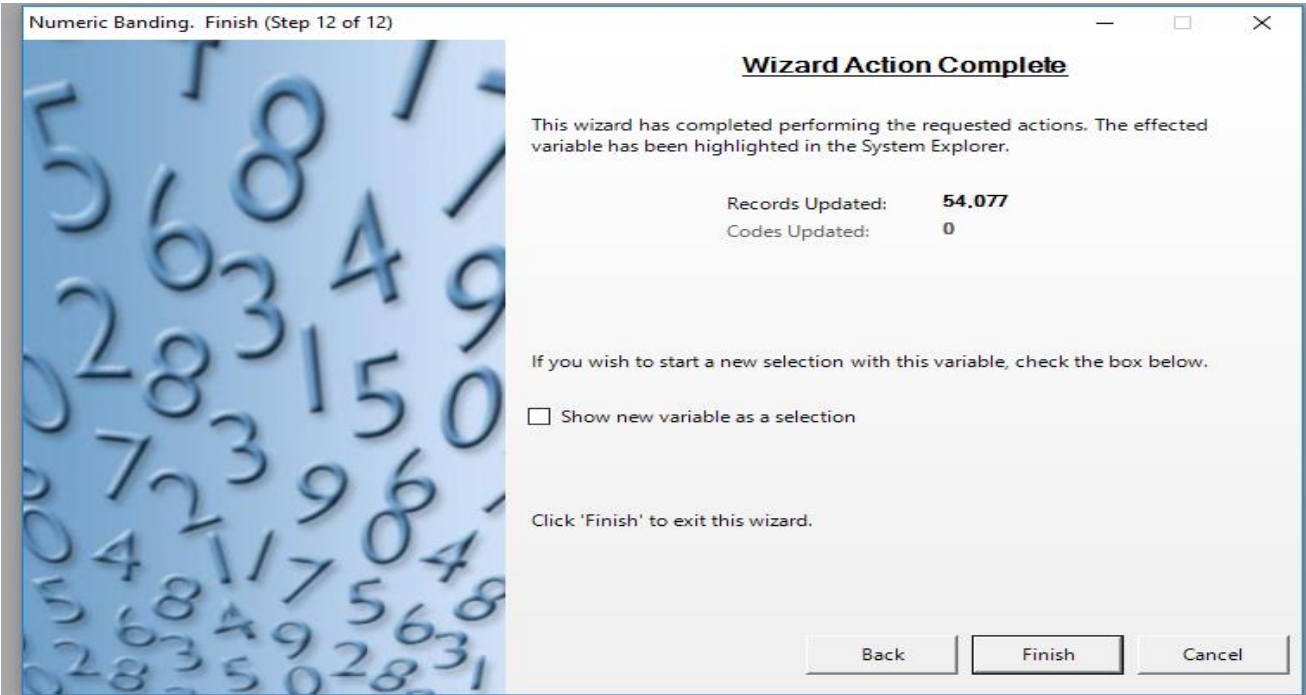
If you wish to change the security attributes for this variable for yourself, your group or other users check the checkbox below

☐ Modify Security Attributes

0 %

BackNextCancel

You have successfully created your new numeric ranges when you get “Wizard Action Complete”. The records updated should total the number of records in your selection.



You can now locate your new variable in the folder that you saved it to. Drag the new variable over into your workspace. The new custom numeric ranges you created will be available as a selector to run analysis and include in a data grid.

